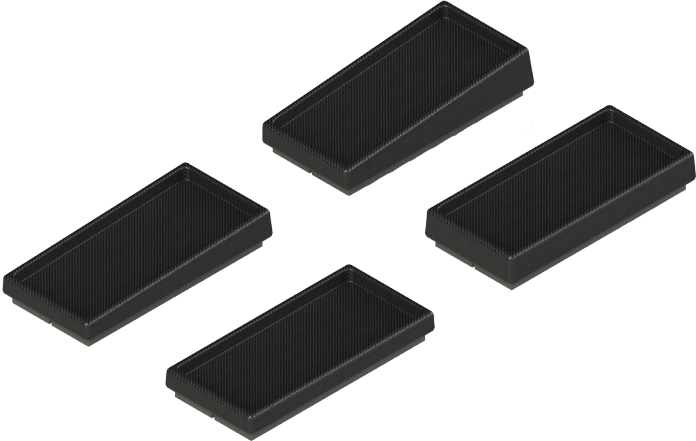


# Spacers & Wedges

## CIVCO Technical Data Sheet



<b>Product Name</b>	Spacers & Wedges
<b>Product Number</b>	107101 Wedge, 2.5° 107102 Wedge, 5° 107103 Spacer, 20 mm 107104 Spacer, 30 mm 107106 Set of four includes: Wedges 2.5° and 5°, Spacers 20 and 30 mm
<b>General Description</b>	Spacers & Wedges are available in a variety of heights and angles to provide positioning offset of the patient for unique treatment needs.
<b>Indications for use</b>	Fixation and repositioning of the head and neck area of the patient during radiotherapy and diagnostics.
<b>MRI Compatible</b>	No
<b>Integration</b>	Available for use with Posifix® baseplates, extensions or overlays.
<b>FDA Clearance</b>	Yes
<b>CE Marked (EU DOC)</b>	Yes
<b>Other Country Registrations</b>	Available upon request
<b>Country of Manufacture</b>	USA

# Technical Details

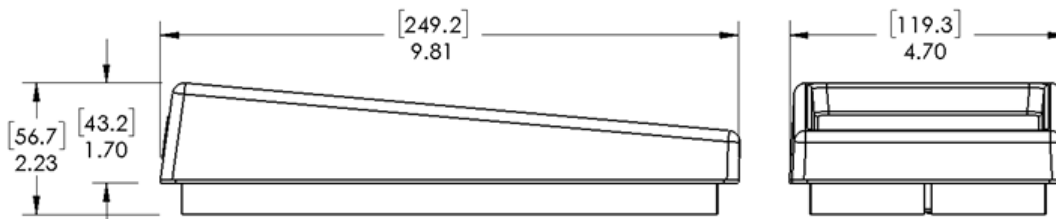
<b>Primary Materials</b>	Carbon Fiber, ABS, LD 45
<b>Weight (approx)</b>	0.2 kg / 0.5 lbs.
<b>Dimensions (mm)</b>	247.5 L x 117.8 W x 43.0 H (max) <b>2.5° Wedge</b> 249.2 L x 119.3 W x 56.7 H (max) <b>5° Wedge</b> 246.9 L x 116.8 W x 33.5 H (max) <b>20 mm Spacer</b> 247.9 L x 117.9 W x 43.5 H (max) <b>30 mm Spacer</b>

<b>Beam Direction</b>	<b>Attenuation at 6MV</b>	
Orthogonally through the permissible radiation area of the device.	2.5° Wedge	2.2%
	5° Wedge	2.2%
	20 mm Spacer	2.2%
	30 mm Spacer	2.2%

## Technical Drawing (2.5° Wedge)

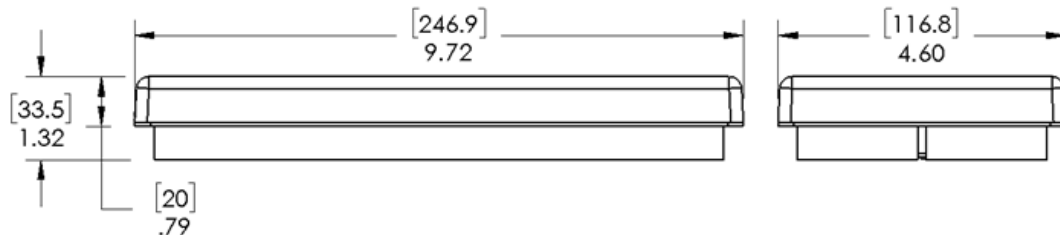


## Technical Drawing (5° Wedge)



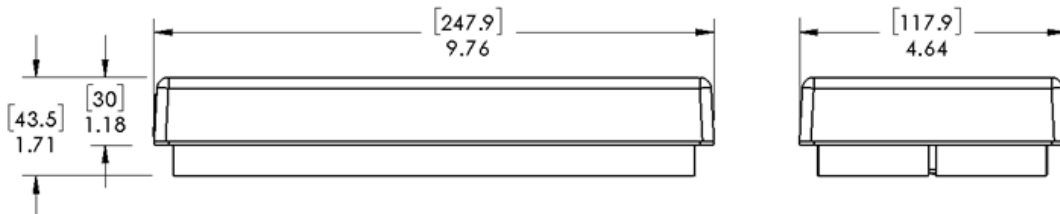
---

## Technical Drawing (20 mm Spacer)



---

## Technical Drawing (30 mm Spacer)



---

## Packaging

<b>Unit Pack</b>	Each
<b>Units / Box</b>	One device - may have several component parts in box
<b>Shelf Life</b>	n/a
<b>Warranty</b>	<a href="#">See CIVCO website for Product Warranty Statement</a>
<b>Sterilization</b>	Non-Sterile
<b>Launch Date</b>	April 2017