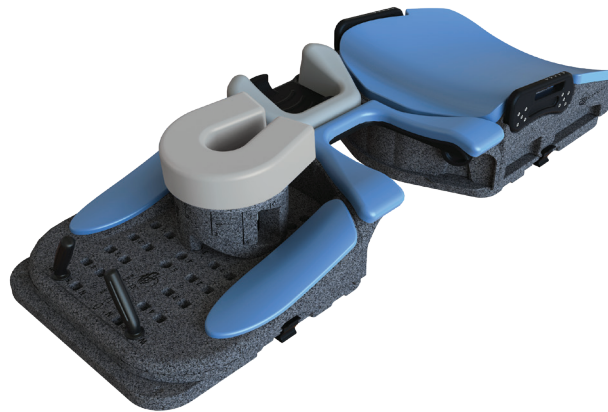


New Horizon™ Prone Breastboard

CIVCO Technical Data Sheet



Product Name	New Horizon™ Prone Breastboard
Product Number	MTHPBB01
General Description	The New Horizon Prone Breastboard assists in providing comfortable, reproducible patient positioning for prone breast treatments. The modular design and variety of accessories for the New Horizon allow you to customize your patient setups, including overall height adjustments.
Indications for use	Large-breasted patients with adequate mobility. Left-breast treatments where detrimental dose to the heart is a concern. Concerns of skin reaction due to breast folds. Need to reduce separation, increase dose homogeneity.
MRI Compatible	No
Integration	2-Pin Indexable to Couchtop
FDA Clearance	Yes
CE Marked (EU DOC)	Yes
Other Country Registrations	Available upon request

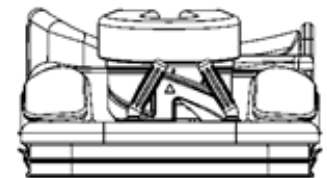
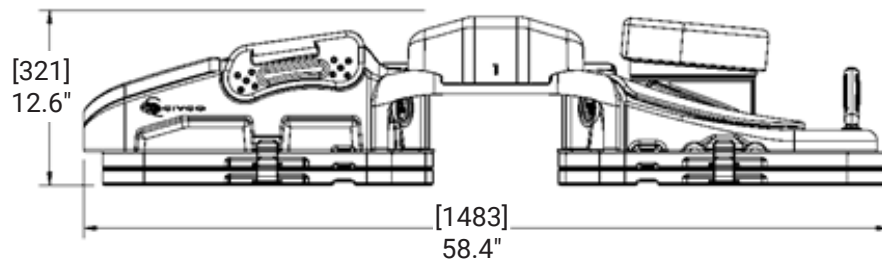
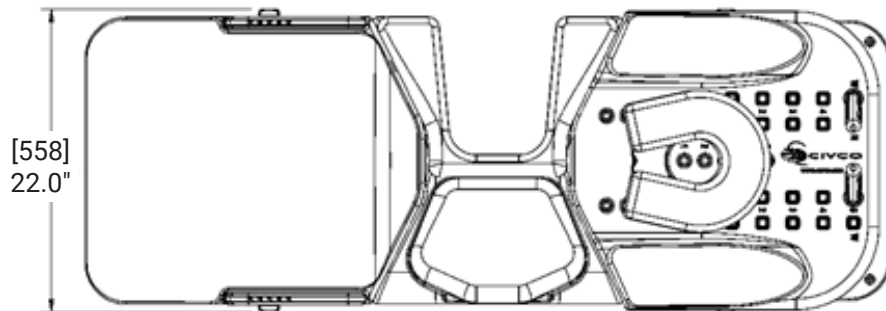
Technical Details

Primary Materials Polyurethane, Polyethylene, Black Acetal

Weight (approx) 27.67 kg / 61 lbs

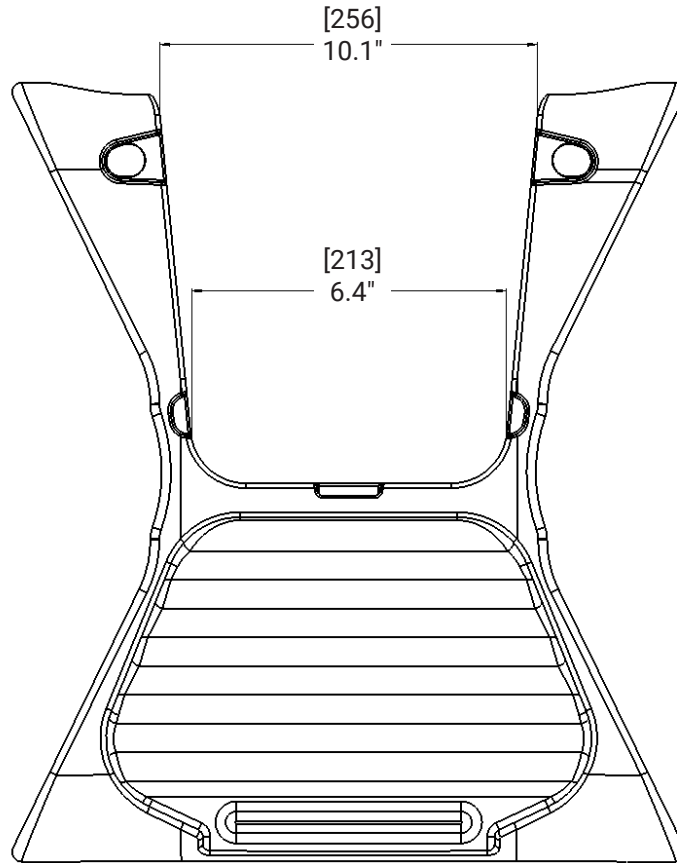
Dimensions (mm) 1483 L x 558 W x 321 H (min.)

Technical Drawing



Country of Manufacture USA

Technical Details - Breast Cutout Area



Packaging

Unit Pack	Each
Units / Box	One device - may have several component parts in box
Shelf Life	n/a
Warranty	See CIVCO website for Product Warranty Statement
Sterilization	Non-Sterile
Launch Date	June 2011

Accessories

System Customization	Patient Handles: Included with MTHPBB01 Contralateral Wedge with Movable Tray : Included with MTHPBB01 Head Cushion Covers: MTHPBB103 New Horizon w/ SBRT Bridge and Clam-Lok™ Cushion: Optional feature, not included
-----------------------------	---

Global Sales Office
Orange City, Iowa, USA
800.842.8688 | +1 712.737.8688

info@CivcoRT.com
www.CivcoRT.com

CIVCO[®]
Radiotherapy

COPYRIGHT © 2018, CIVCO IS A REGISTERED TRADEMARK OF CIVCO MEDICAL SOLUTIONS. CLAM-LOK AND NEW HORIZON ARE TRADEMARKS OF CIVCO. ALL OTHER TRADEMARKS ARE PROPERTY OF THEIR RESPECTIVE OWNERS. ALL PRODUCTS MAY NOT BE LICENSED IN ACCORDANCE WITH CANADIAN LAW. 2015CI012 REV. D