

# Mastercast™ Pro Thermoplastics

## CIVCO Technical Data Sheet



Mastercast Pro is a drape-style mask requiring less stretching, therefore resulting in minimal shrinkage after cooling. These thermoplastics are compatible with the Posifix® Patient Positioning Systems. For a full list of available thermoplastic part numbers, please visit [www.civcort.com](http://www.civcort.com).

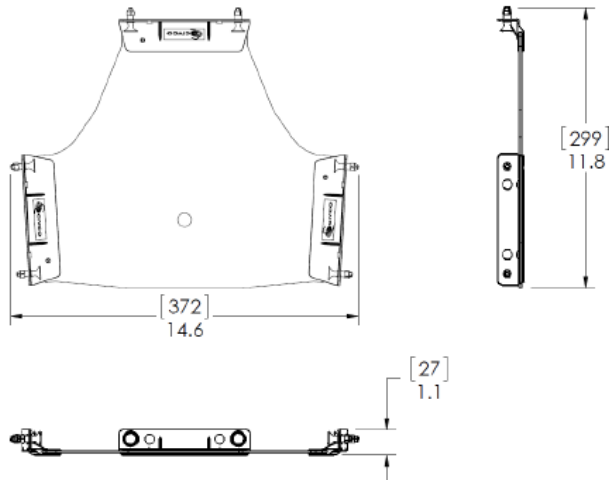
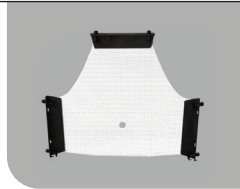
### Product Configuration

#### Mastercast Pro PR3

Head Only (3 pt)  
0.5 lbs (0.23 kg)  
299 L x 372 W x 27 H (mm)

**990030**

2.3 mm thickness

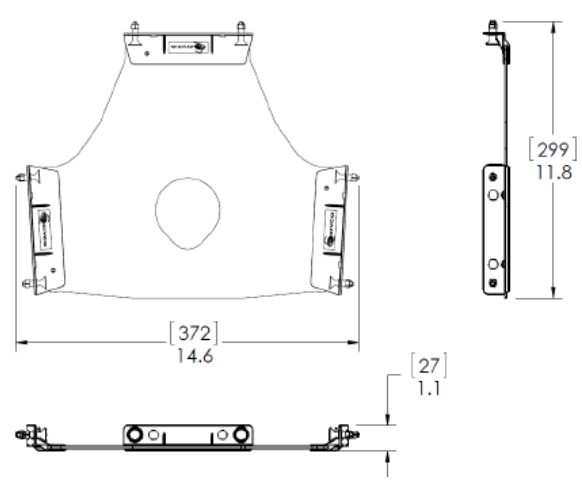
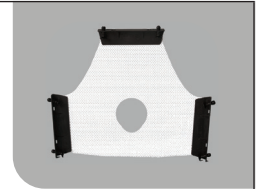


#### Mastercast Pro PR31

Head Only (3 pt)  
0.5 lbs (0.23 kg)  
299 L x 372 W x 27 H (mm)

**990031**

2.3 mm thickness

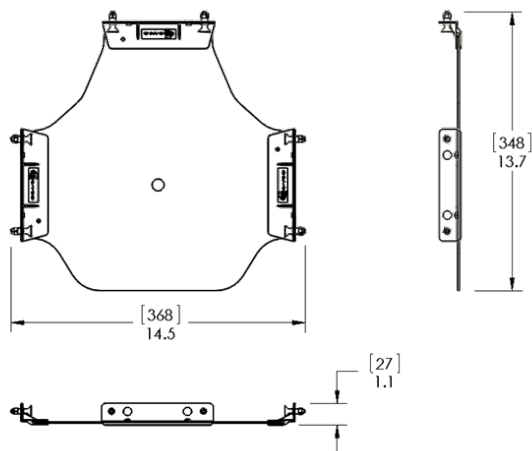


#### Mastercast Pro PR44

Head Only w/ Larynx Extension (5 pt)  
0.56 lbs (0.25 kg)  
348 L x 368 W x 27 H (mm)

**990044**

2.3 mm thickness

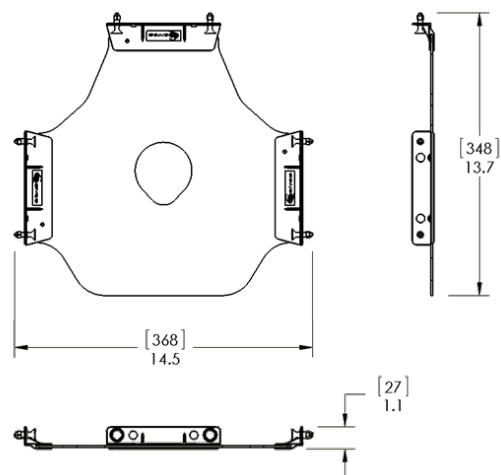


#### Mastercast Pro PR45

Head Only w/ Open-face (3 pt) & Larynx Extension  
0.53 lbs (0.24 kg)  
348 L x 368 W x 27 H (mm)

**990045**

2.3 mm thickness

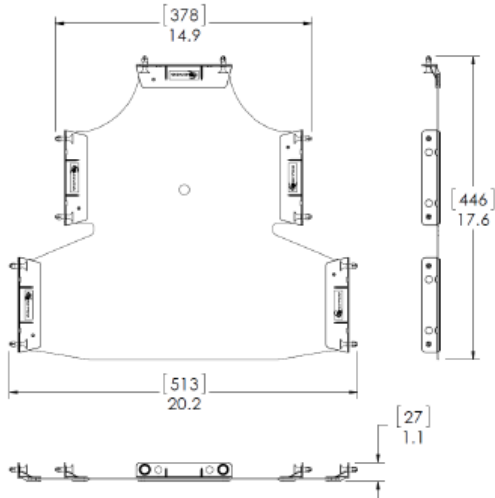
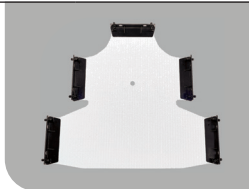


**Mastercast Pro PR5**

Head, Neck & Shoulders (5 pt)  
 0.86 lbs (0.39 kg)  
 446 L x 513 W x 27 H

**990145**

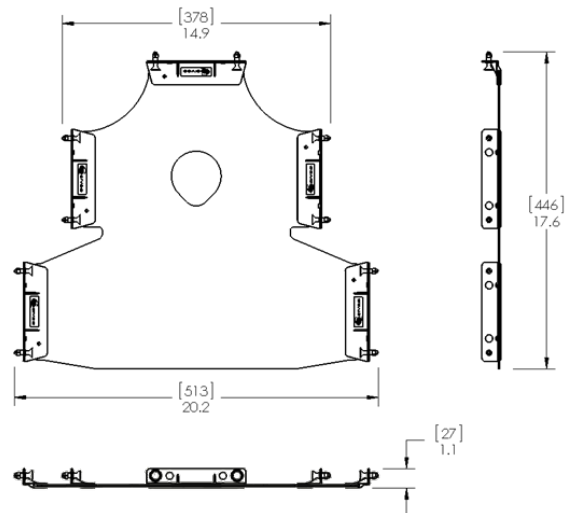
2.3 mm thickness

**Mastercast Pro PR51**

Head, Neck & Shoulders w/ Open-face (5 pt)  
 0.86 lbs (0.39 kg)  
 446 L x 513 W x 27 H (mm)

**991145**

2.3 mm thickness



## Technical Details

<b>Primary Materials</b>	Polycaprolactone, Black ABS, Black Nylon, Black Polycarbonate	
<b>Attenuation (Unstretched Mask)**</b>	<b>6MV:</b> 0.7%	<b>18MV:</b> 0.1%
<b>Thickness</b>	2.3 mm (.090)	
<b>Perforation</b>	5%	
<b>Density</b>	1.145 g/cm <sup>3</sup>	
<b>Surface feeling</b>	Smooth	
<b>Color</b>	White	
<b>Odor</b>	None	
<b>Biocompatible</b>	Yes	
<b>Transparent when activated</b>	Yes	
	<b>Waterbath</b>	<b>Dry Heat Oven</b>
<b>Activation temperature</b>	70° C / 158° F	75° C / 165° F
<b>Activation time</b>	1 min (Head-only and H, N & S)	5–9 min (Head-only and H, N & S)
<b>Molding time (maximum)*<sup>a</sup></b>	1 min	N/A
<b>Hardening time*<sup>b</sup></b>	9 min	N/A
<b>Time to completion (minimum)*<sup>c</sup></b>	10 min	10 min

## Product Details

Indications for use	Head & Neck Immobilization
Contraindications	None
MRI Compatible	MR Safe
Integration	Connects to Universal Couchtop™ and Baseplates with Posifix® connection
FDA Clearance	Yes
CE Marked (EU DOC)	Yes
Other Country Registrations	Available upon request
Country of Manufacture	USA

## Packaging Details

Unit Pack	1 Piece
Units / Box	10 Pieces
Shelf Life	Not Applicable
Warranty	<a href="#">See CIVCORT website for Product Warranty Statement</a>
Sterilization	Non-Sterile

## Test Procedures used to Acquire Data

### Definitions\*

- Molding Time** - the time frame available from when the mask is removed from the waterbath to the time that the mask can no longer be molded or formed.
- Hardening Time** - the time between the molding and completion time where the mask should be cooling and hardening on its own without being manipulated or molded.
- Time to Completion** - the total time from when the mask is taken out of the waterbath or dry heat oven to when the mask can be removed from the patient.

### Attenuation Test Conditions\*\*

- 100 cm SAD
- 10 x 10 cm Field Size
- 6 MV Dmax = 1.5 cm  
18 MV Dmax = 3.0 cm

### Global Sales Office

Orange City, Iowa, USA  
800.842.8688 | +1 712.737.8688

info@CivcoRT.com  
www.CivcoRT.com

