

## Body Pro-Lok ONE™ System on iBEAM® evo Couchtops with evo Adapter

Patient:

Date:

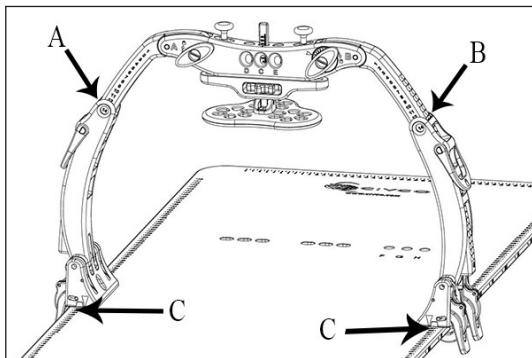
Notes:

**Important instructions, please read:**

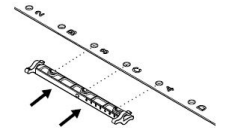
When transferring a setup from the Universal Couchtop™ or ONEPlatform™ to the iBEAM evo Couchtop with the Body Pro-Lok ONE evo Adapter, reference Appendix A for available setup regions.



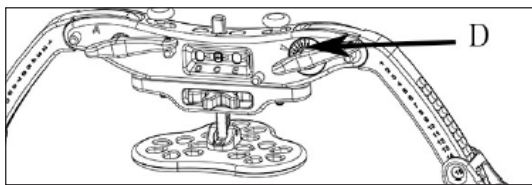
**1** Respiratory Plate (check all that apply):      Standard      Wide      ComfortCare™ Cushion



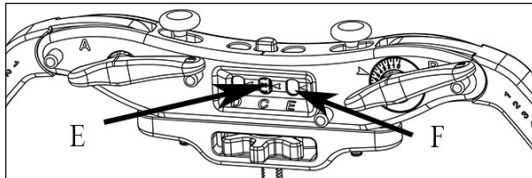
Body Pro-Lok ONE evo adapter (check if utilized)  
 evo Couchtop indexing:  
 (Example: 3 C 4; See Appendix A Reference Sheet)



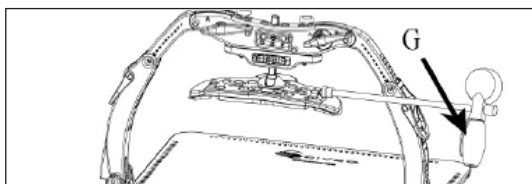
A) ONEBridge™ Side A:  
 B) ONEBridge Side B:  
 C) Docking Index:



D) ONEBridge Lateral Position:

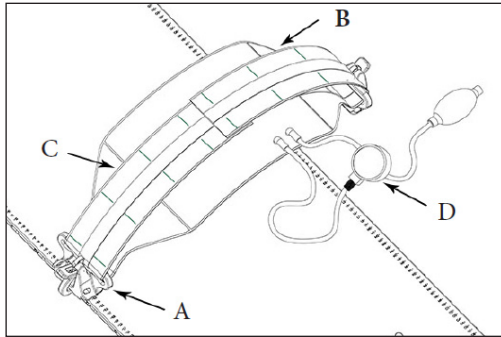


E) Respiratory Plate Height:  
 F) Respiratory Plate Lateral Position:    D    C    E



G) Set pressure between:                  and  
 (only if using ComfortCare Cushion)

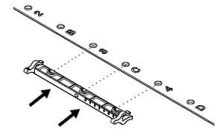
**2** Respiratory Belt (check if utilized)



Body Pro-Lok ONE™ evo adapter (check if utilized)

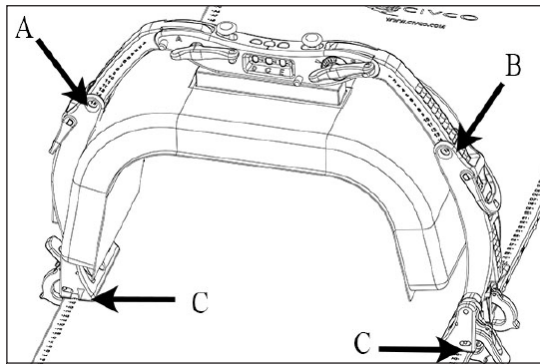
evo Couchtop indexing:

(Example: 3 C 4; See Appendix A Reference Sheet)



- A) Docking Index:
- B) Left velcro strap indexed at: -
- C) Right velcro strap indexed at: -
- D) Set pressure between: and

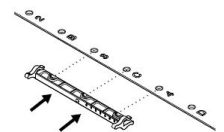
**3** Clam-Lok™ Cushion (check if utilized)



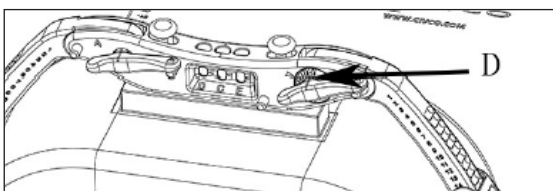
Body Pro-Lok ONE evo adapter (check if utilized)

evo Couchtop indexing:

(Example: 3 C 4; See Appendix A Reference Sheet)

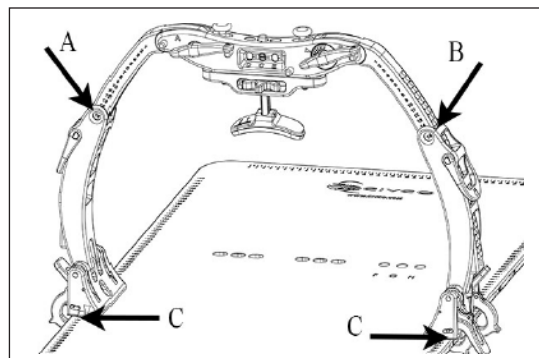


- A) ONEBridge™ Side A:
- B) ONEBridge Side B:
- C) Docking Index:



- D) ONEBridge Lateral Position:

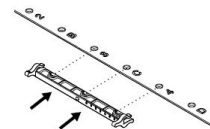
**4** Forehead Brace (check if utilized)



Body Pro-Lok ONE™ evo adapter (check if utilized)

evo Couchtop indexing:

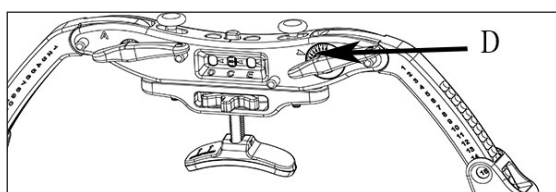
(Example: 3 C 4; See Appendix A Reference Sheet)



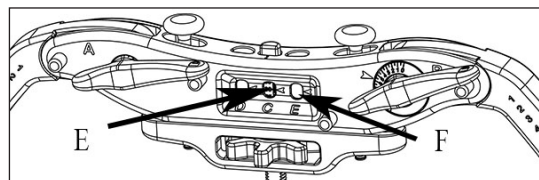
A) ONEBridge™ Side A:

B) ONEBridge Side B:

C) Docking Index:



D) ONEBridge Lateral Position:



E) Forehead Brace Height:

F) Forehead Brace Lateral Position: D C E

**5** Additional indexable accessory:

Indexed at:

**6** Additional indexable accessory:

Indexed at:

**7** Additional indexable accessory:

Indexed at:

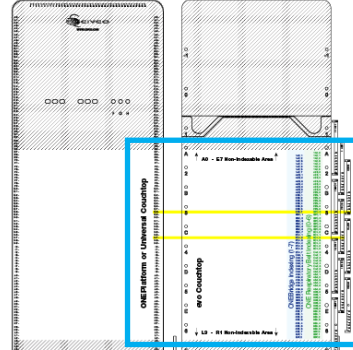
**8** Additional indexable accessory:

Indexed at:

# Appendix A: evo Adapter Indexing Example

Blue box enlarged to show indexing detail.  
Grey indicates non-indexable areas.

ONEPlatform or  
Universal Couchtop      evo  
Couchtop



ONEPlatform™ or Universal Couchtop™	Indexing	ONEBridge™ Indexing (1-7)	ONE Respiratory Belt Indexing (0-6)
E6			1A2, 0
E7			1A2, 1
E8			1A2, 2
E9			1A2, 3
F0			1A2, 4
F1			1A2, 5
F2			1A2, 6
F3			A2B, 0
F4			A2B, 1
F5			A2B, 2
F6			A2B, 3
F7			A2B, 4
F8			A2B, 5
F9			A2B, 6
G0			A2B, 7
G1			2B3, 0
G2			2B3, 1
G3			2B3, 2
G4			2B3, 3
G5			2B3, 4
G6			2B3, 5
G7			2B3, 6
G8			2B3, 7
G9			B3C, 0
H0			B3C, 1
H1			B3C, 2
H2			B3C, 3
H3			B3C, 4
H4			B3C, 5
H5			B3C, 6
H6			B3C, 7
H7			3C4, 0
H8			3C4, 1
H9			3C4, 2
H0			3C4, 3
I0			3C4, 4
I1			3C4, 5
I2			3C4, 6
I3			3C4, 7
I4			C4D, 0
I5			C4D, 1
I6			C4D, 2
I7			C4D, 3
I8			C4D, 4
I9			C4D, 5
J0			C4D, 6
J1			C4D, 7
J2			4D5, 0
J3			4D5, 1
J4			4D5, 2
J5			4D5, 3
J6			4D5, 4
J7			4D5, 5
J8			4D5, 6
J9			4D5, 7
K0			D5E, 0
K1			D5E, 1
K2			D5E, 2
K3			D5E, 3
K4			D5E, 4
K5			D5E, 5
K6			D5E, 6
K7			D5E, 7
K8			D5E, 8
K9			D5E, 9
L0			D5E, 10
L1			D5E, 11
L2			D5E, 12
L3			D5E, 13

evo Couchtop

↓ L3 - R1 Non-Indexable Area ↓

# Body Pro-Lok ONE™ System iBEAM® evo Adapter Reference Sheet

This reference sheet is a tool for indexing the ONEBridge™ and ONE Respiratory Belt when using the ONEPlatform™ and iBEAM evo Couchtop Standard (415 mm) Extension with superior ends aligned.



ONEPlatform or Universal Couchtop	ONEBridge on evo Couchtop	ONE Respiratory Belt on evo Couchtop
E 7	-	1A2, 0
E 8	1A2, 1	1A2, 1
E 9	1A2, 2	1A2, 2
F 0	1A2, 3	1A2, 3
F 1	1A2, 4	1A2, 4
F 2	1A2, 5	1A2, 5
F 3	1A2, 6	1A2, 6
F 4	1A2, 7	A2B, 0
F 5	A2B, 1	A2B, 1
F 6	A2B, 2	A2B, 2
F 7	A2B, 3	A2B, 3
F 8	A2B, 4	A2B, 4
F 9	A2B, 5	A2B, 5
G 0	A2B, 6	A2B, 6
G 1	A2B, 7	2B3, 0
G 2	2B3, 1	2B3, 1
G 3	2B3, 2	2B3, 2
G 4	2B3, 3	2B3, 3
G 5	2B3, 4	2B3, 4
G 6	2B3, 5	2B3, 5
G 7	2B3, 6	2B3, 6
G 8	2B3, 7	B3C, 0
G 9	B3C, 1	B3C, 1
H 0	B3C, 2	B3C, 2
H 1	B3C, 3	B3C, 3
H 2	B3C, 4	B3C, 4
H 3	B3C, 5	B3C, 5
H 4	B3C, 6	B3C, 6
H 5	B3C, 7	3C4, 0
H 6	3C4, 1	3C4, 1
H 7	3C4, 2	3C4, 2
H 8	3C4, 3	3C4, 3
H 9	3C4, 4	3C4, 4
I 0	3C4, 5	3C4, 5

cont'd ONEPlatform or Universal Couchtop	ONEBridge on evo Couchtop	ONE Respiratory Belt on evo Couchtop
I 1	3C4, 6	3C4, 6
I 2	3C4, 7	C4D, 0
I 3	C4D, 1	C4D, 1
I 4	C4D, 2	C4D, 2
I 5	C4D, 3	C4D, 3
I 6	C4D, 4	C4D, 4
I 7	C4D, 5	C4D, 5
I 8	C4D, 6	C4D, 6
I 9	C4D, 7	4D5, 0
J 0	4D5, 1	4D5, 1
J 1	4D5, 2	4D5, 2
J 2	4D5, 3	4D5, 3
J 3	4D5, 4	4D5, 4
J 4	4D5, 5	4D5, 5
J 5	4D5, 6	4D5, 6
J 6	4D5, 7	D5E, 0
J 7	D5E, 1	D5E, 1
J 8	D5E, 2	D5E, 2
J 9	D5E, 3	D5E, 3
K 0	D5E, 4	D5E, 4
K 1	D5E, 5	D5E, 5
K 2	D5E, 6	D5E, 6
K 3	D5E, 7	5E6, 0
K 4	5E6, 1	5E6, 1
K 5	5E6, 2	5E6, 2
K 6	5E6, 3	5E6, 3
K 7	5E6, 4	5E6, 4
K 8	5E6, 5	5E6, 5
K 9	5E6, 6	5E6, 6
L 0	5E6, 7	E6F, 0
L 1	E6F, 1	E6F, 1
L 2	E6F, 2	E6F, 2

Global Sales Office  
Orange City, Iowa, USA  
800.842.8688 | +1 712.737.8688

info@CivcoRT.com  
www.CivcoRT.com