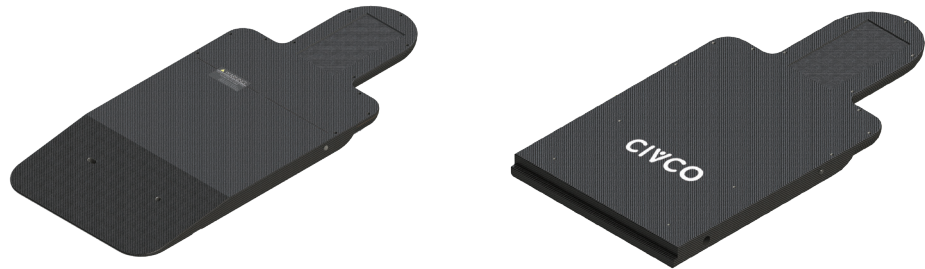


Proton Head & Neck Overlay and Extension

CIVCO Technical Data Sheet



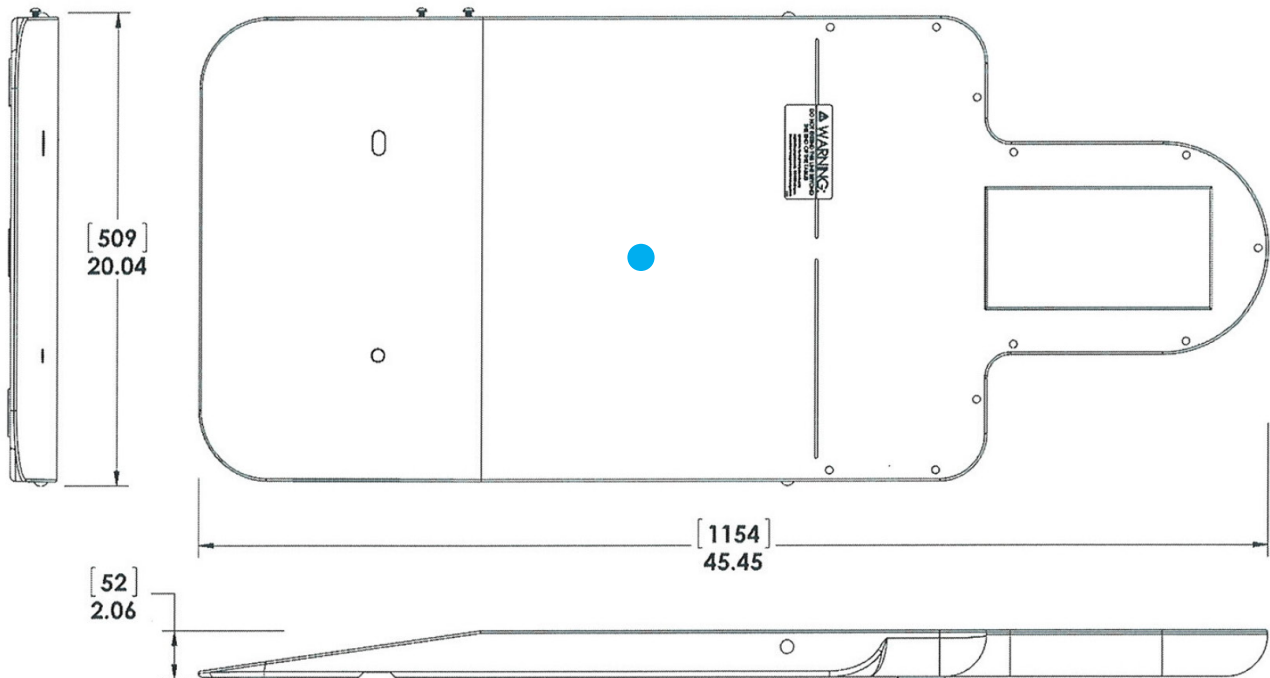
Product Name	Proton Overlay	Proton Extension
Product Number	MTPT210002	MTPT210001
General Description	Made of carbon fiber with a foam core for use in proton environments.	
Indications for use	These devices are indicated to aid in supporting, positioning, and/or immobilization of adult and pediatric patients undergoing radiation therapy of the head, brain, neck and spine including radiosurgery and electron, photon, and proton treatments. The device is also used during image acquisition to support treatment planning.	
MRI Compatible	No	
Integration	2-Pin Indexable to Couchtop	Secure on superior end of couch with pin and clamp attachments
FDA Clearance	Yes	
CE Marked (EU DOC)	Yes	
Other Country Registrations	Available upon request	
Country of Manufacture	USA	

Technical Details

Part Number	MTPT210002	
Primary Materials	Carbon Fiber, Rohacell™ 110 Foam	
Weight (approx)	5.17 kg / 11.4 lbs	
Dimensions (mm)	1154 L x 509 W x 52 H	
Dosimetric Properties	Location	Proton water equivalency R80
	Center ●	9.1 mm

Performance Specifications are for reference only, values may vary based on setup and equipment.

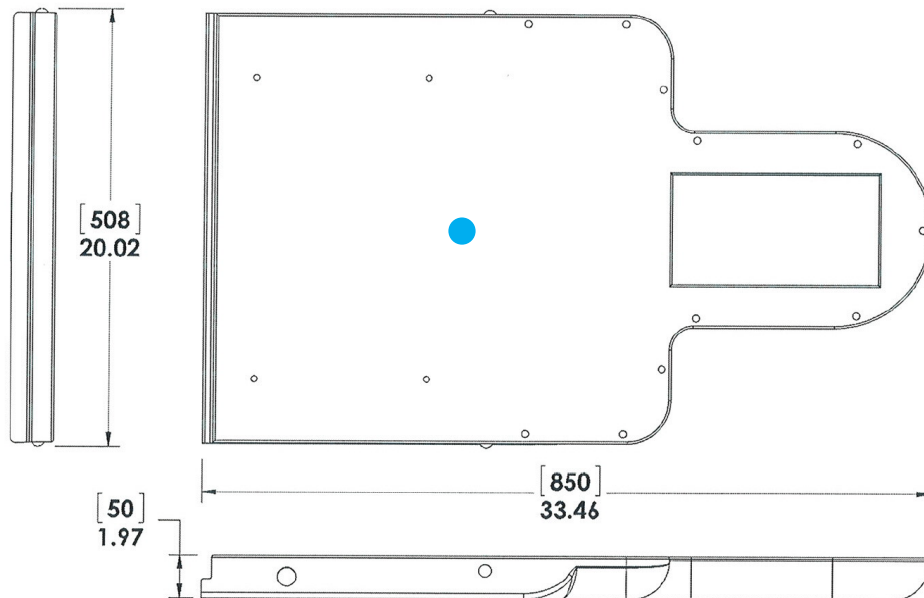
Technical Drawing



Part Number	MTPT210001	
Primary Materials	Carbon Fiber, Rohacell™ 110 Foam	
Weight (approx)	5.44 kg / 12 lbs	
Dimensions (mm)	850 L x 508 W x 50 H	
Dosimetric Properties	Location	Proton water equivalency R80
	Center ●	9.1 mm

Performance Specifications are for reference only, values may vary based on setup and equipment.

Technical Drawing



Packaging

Unit Pack	Each
Units / Box	One device - may have several component parts in box
Shelf Life	n/a
Warranty	See CIVCO website for Product Warranty Statement
Sterilization	Non-Sterile
Launch Date	September 2011

Global Sales Office

Orange City, Iowa, USA
800.842.8688 | +1 712.737.8688

info@CivcoRT.com
www.CivcoRT.com

